

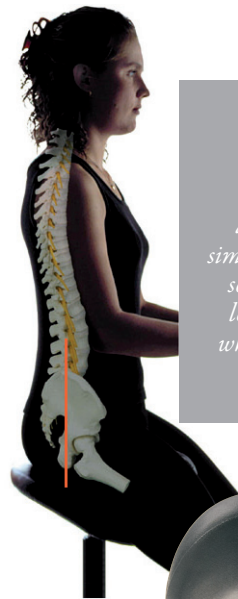
# Brewer

## 135DSS & PS135 Series Split-Saddle Seat

Patented breakthrough provides a unique angle on comfort

### Split-saddle seat designed to provide unmatched comfort

- Eases load on back muscles by distributing weight over "sit bones"
- Saddle angle results in wider hip abduction to enhance posture, naturally align the spine and relieve shoulder and neck tension
- Improved posture also supports deeper breathing to help reduce fatigue
- Split-seat design helps cool the body, relieve pressure and improve circulation



*Enhance posture and comfort.*

*For optimal comfort and enhanced posture, simply adjust the seat height so your upper and lower legs create a 135° angle while both feet are flat on the ground.*

### Tailor height to fit the user

- Available in three different column heights
- Designed to accommodate users under 5' 3", those that are 5' 3"-5' 11", and those over 5' 11"
- Conveniently adjust to exact user preference with pneumatic height adjustment

### 135DSS features unique dynamic motion

- Innovative 360° dynamic movement engages core muscles
- Helps strengthen back muscles over time
- Makes dentists and hygienists more comfortable and productive throughout their work day



Model 135DSS



Model PS135

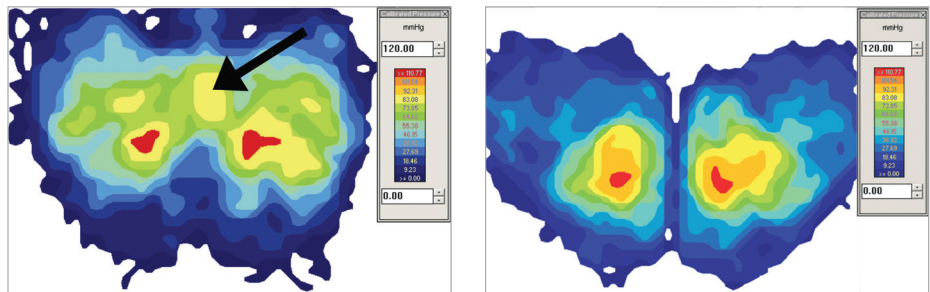
## 135DSS & PS135 Series Split-Saddle Seat

Brewer exclusives help optimize a practice's bottom-line

### Brewer Differentiators

- *Patented split-saddle-seat design promotes back health*
- *Built in the USA, with US and imported parts, to Brewer quality standards*
- *Standard 5-year warranty*

*Pressure mapping images clearly show the significant pressure relief provided by the patented Salli<sup>®</sup> technology found in the Brewer Split-Saddle Seat.*



Ordinary Saddle Seat

Dynamic Split Saddle Seat

### 135DSS Series

All 135DSS Saddle Seats feature:

- Innovative split-saddle-seat design with dynamic movement offering full 360° tilt
- Seamless upholstery available in a wide variety of color options
- 23" diameter cast aluminum base w/large casters
- 250 lb. weight capacity



### PS135 Series

All PS135 Saddle Seats feature:

- Innovative split-saddle-seat design
- Comfortable and durable, soft black polyurethane seat
- Stable, 21.5" diameter five-star black ABS plastic base
- Large, dual-wheel casters, standard, for easy rolling
- 250 lb. weight capacity



135DSS Models	Adjustable Height Range	Shipping Weight	Recommended User Height
135DSS-L	18.75"-23.75"	28.5 lbs.	Under 5' 3"
135DSS	22.5"-29.75"	28 lbs.	5' 3"-5' 11"
135DSS-H	24"-33.75"	29 lbs.	Over 5' 11"

PS135 Models	Adjustable Height Range	Shipping Weight	Recommended User Height
PS135-1	18.5"-23.5"	22 lbs.	Under 5' 3"
PS135-2	21.75"-29"	22 lbs.	5' 3"-5' 11"
PS135-3	25"-34"	22 lbs.	Over 5' 11"