

With the uncertainty of today's new healthcare reality,  
what can the right clinical support partner offer you?



By delivering the thoughtful innovations that  
take you further, Brewer offers you

## The Power to Advance

# Brewer

The Power to Advance  
Safely  
The Power to Advance



According to recent statistics, patient falls are the most commonly reported incidents in hospitals.<sup>2</sup> Plus, more than one-third of nurses' back injuries are due to patient handling,<sup>3</sup> with an average back injury resulting in five lost working days.<sup>4</sup>

*With patients getting larger and 75% of manually assisted transfers onto exam tables already carrying risk of injury,<sup>1</sup> how are you supposed to successfully address safe patient handling?*

#### Brewer offers unique ways to improve safety.

We've been leading the way in the development of innovative solutions designed to help you safely meet the patient handling needs of individuals with mobility issues. Whether it's an aging population, obese patients, pregnant women or those with an injury or physical disability,

Brewer provides the practical, common-sense approaches to today's do-more-with-less demands that you won't find anywhere else.

- Safely get patients onto and off of virtually any exam table or elevated procedure surface with the breakthrough Low/High Patient Lift – LiftMate™. It's an affordable, highly mobile way to reduce the risk of injury for patients and clinicians.
- Experience a new performance standard in safe patient handling with the industry's only level 18" wheelchair-to-seated-position transfer height in a power exam table. Our Access High-Low Exam Table® line also features an industry-leading 700lb patient weight capacity.
- Benefit from pressure-management expertise including the exclusive use of pressure-reducing HybriGel™ foam on everything from stools to therapeutic support surfaces, to help prevent musculoskeletal disorders, bedsores and other pressure-related complications.



Access High-Low Exam Table



FLEX™ Access Exam Table



LiftMate Patient Lift



Access Exam Table



Assist Power Procedure Table



Element Treatment Table



Care Provider Seating



Eco-Series LED Exam Room Lighting



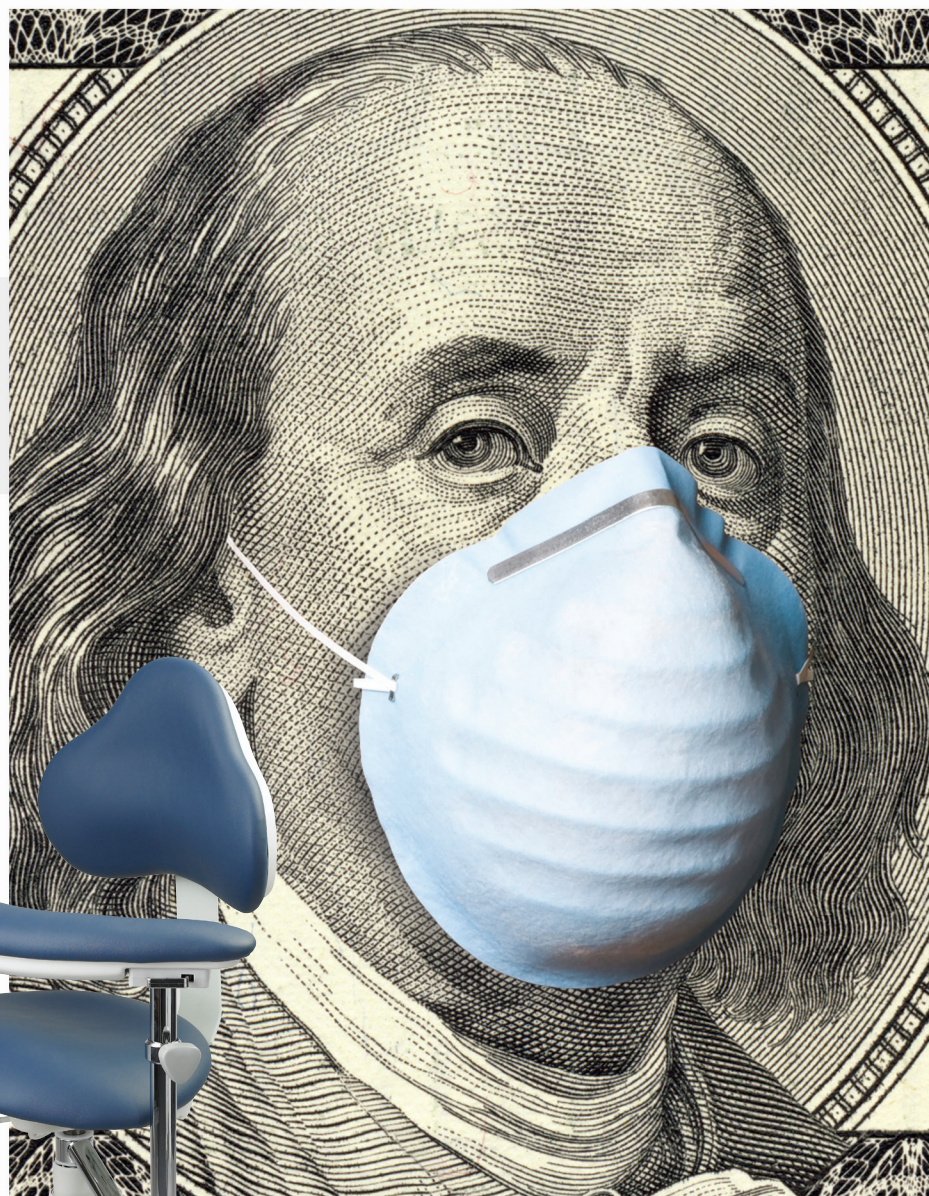
Infusion Pump Stand Series

Brewer

Visit [brewercompany.com](http://brewercompany.com)



# The Power to Advance Financially



Whether you're in the dental or medical field, the ability to prevent injuries can have a profound impact on your bottom line.

*Since statistics show that 81% of dental professionals suffer from lower back pain,<sup>5</sup> what can you do about these potentially painful setbacks to production?*

## Brewer safeguards the backbone of your practice.

Brewer consistently demonstrates this with ingenious, task-based ergonomic advances that put you in a healthier position – physically and financially.

- Dental professionals can strengthen core muscles as they work with the patented dynamic split saddle seat designed to improve endurance and optimize production.
- Assistants and hygienists benefit from the latest neutral-posture seating designs tailored to their size and the exclusive use of pressure-reducing HybriGel™ foam in seat and body supports to help prevent musculoskeletal disorders that can hinder production or even cut careers short.
- Minimize profit-robbing “Never Events,” lawsuits and worker’s compensation claims with performance features only found in our Access High-Low Exam Tables®, FLEX™ Access Exam Tables and LiftMate™ Low/High Patient Lift.
- Help drive patient-satisfaction-based reimbursement dollars with our solutions designed to preserve patient dignity, in order to ensure safe patient handling while maximizing your ROI.



135DSS Series

9200 Series

9100 Series

9000 Series

3300 Series

3100 Series

21520 Series

Brewer

Visit [brewercompany.com](http://brewercompany.com)



# The Power to Advance Competitively



Medical professionals and the equipment suppliers that support them share a common goal today: getting all the help they can to prevent "Never Events."

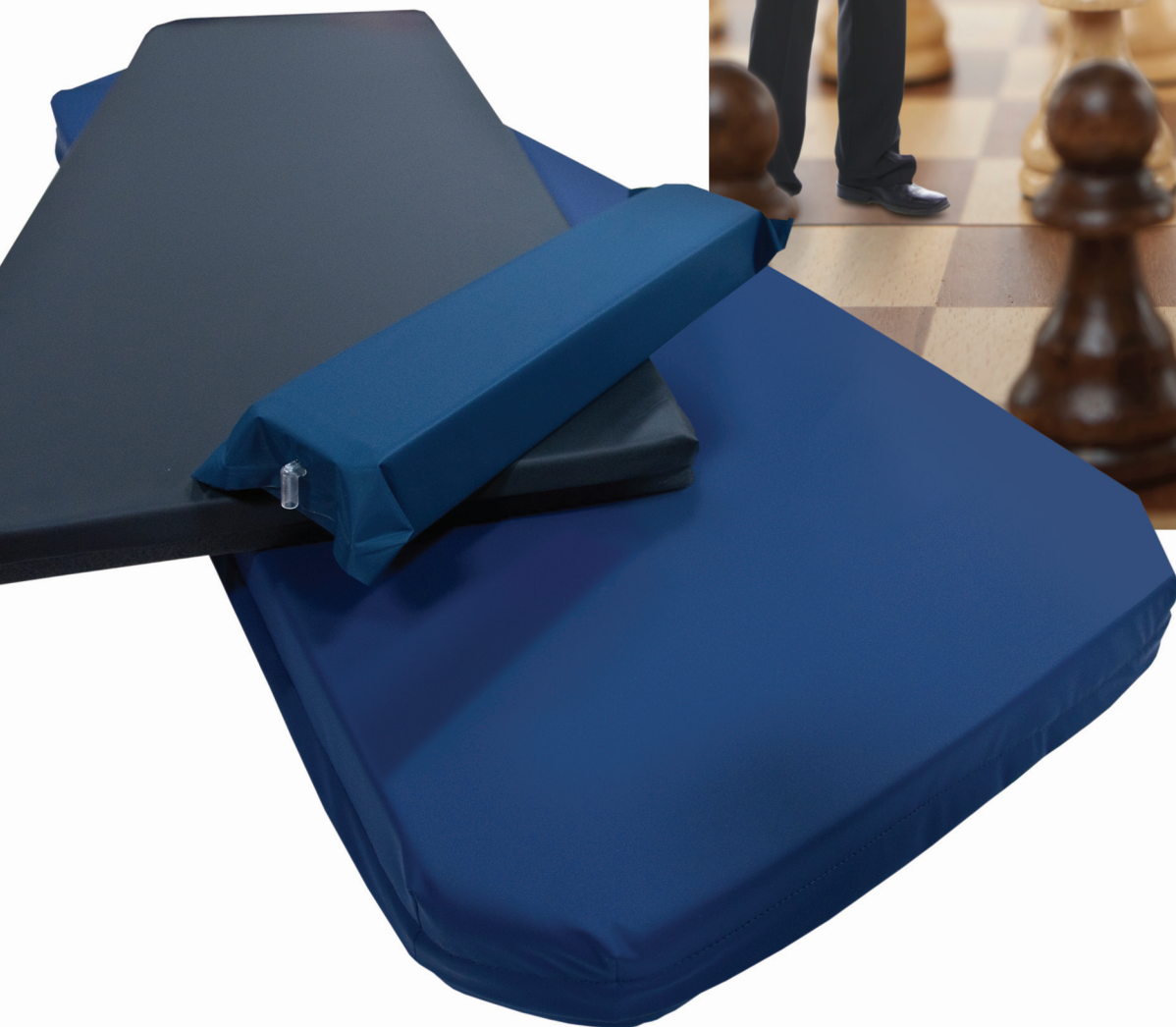
*Healthcare studies indicate that your equipment can impact recovery times from the moment a patient enters the system. So what are you doing to ensure you remain as competitive as you can be?*

## Brewer has your back, too.

By working closely with healthcare providers and vertically integrating capabilities, services and technologies, Brewer produces meaningful advancements Safe-Patient Handling Coordinators seek to make "Never Events" a thing of the past.

Our approach also means that many of the biggest OEM names in healthcare turn to us for the value-added therapeutic support surfaces, custom seating and assembly solutions that give them a powerful edge in an increasingly competitive market.

- **Take advantage of a proactive, collaborative design/development approach** that makes Brewer a true, bottom-line business partner.
- **Minimize total cost of ownership for manufacturers and end-users alike** with our innovative concepts, leading-edge design and manufacturing, and industry-best warranties.
- **Take on the world** with complete confidence knowing Brewer is FDA registered and ISO 13485:2003 certified.



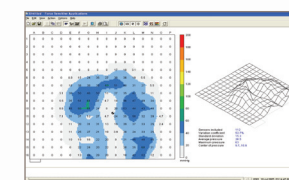
Engineering



Ergonomic Design  
& Prototyping



Product Testing



Pressure Mapping



Turn-key  
Manufacturing

**Brewer**

Visit [brewercompany.com](http://brewercompany.com)

The Power to Advance The Power to Advance The Power



Clinical Support Solutions

Advanced Ergonomic Seating

Custom OEM Products

Patient handling and seating solutions are playing an increasingly important role in practices today. They directly impact your clinical, financial and operational goals more so than ever before. That's why we're proud to bring the solutions to market that offer you The Power to Advance. Safely. Financially. Competitively.

**For more information about the many ways we deliver The Power to Advance, contact your Brewer representative today.**

- <sup>1</sup> William Charney, "Back Injury Among Healthcare Workers."
- <sup>2</sup> Krauss, M.J., Nguyen, S.L., Dunagan, W.C., Birge, S., Constantinou, E., Johnson, S., et al. (2007). "Circumstances of patient falls and injuries in 9 hospitals in a Midwestern healthcare system." *Infection Control and Hospital Epidemiology*, 28(5), 544-550.
- <sup>3</sup> McAbee RR, Wilinon WE. "Back Injuries and Registered Nurses." *AAOHNJ* 1998;36:106-12.
- <sup>4</sup> Siddharthan, Kris; Nelson, Audrey; Tiesman, Hope; Chen, FangFei. "Cost Effectiveness of a Multifaceted Program for Safe Patient Handling."
- <sup>5</sup> Auguston TE, Morken T. "Musculoskeletal problems among dental health personnel." *Tidsskr Nor Laegeforen*. 1996;116(23):2776-2780.

**Brewer**

The Brewer Company, LLC  
N88 W13901 Main Street, Suite 100  
Menomonee Falls, WI 53051

1.888.273.9371  
[www.brewercompany.com](http://www.brewercompany.com)

