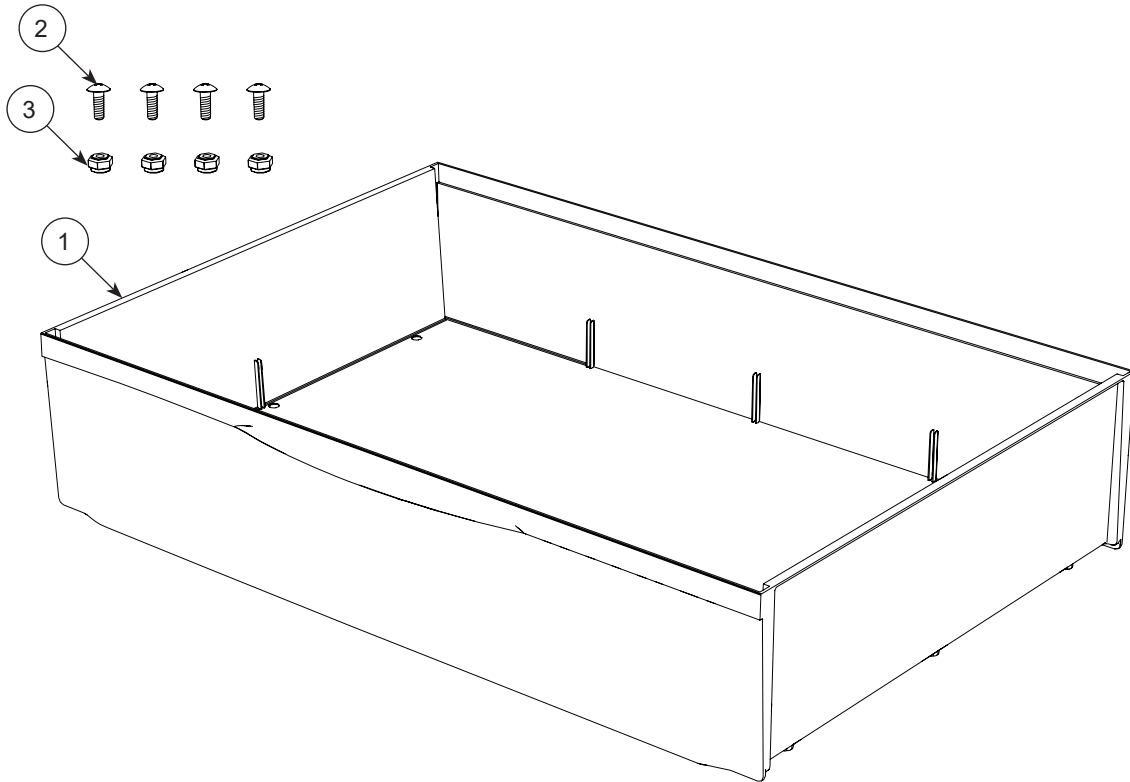


3500151 Rear Drawer Assembly Service Kit



Item No.	Description	Qty
1	Rear Drawer Assembly	1
2	#8 Screw, 5/8" Long	2
3	#8 Hex Nut	2

Tools Required

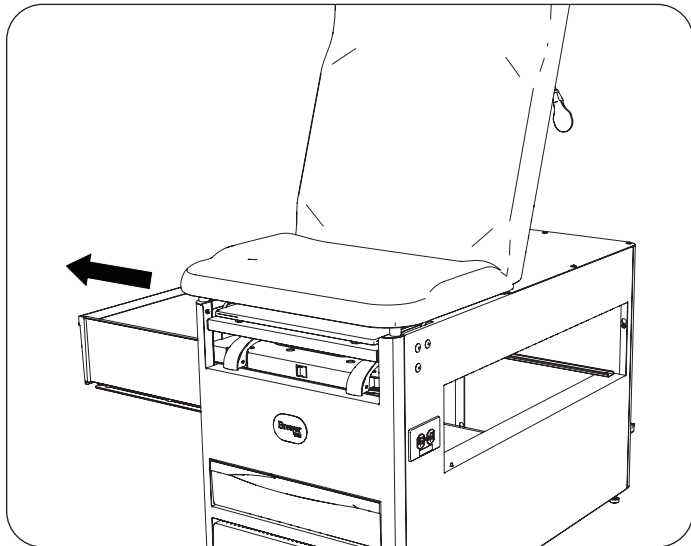
1. Power Drill with 3/16" Drill Bit
2. 9/64" Allen Wrench
3. 11/32" Socket or Open End Wrench

Registering your Brewer product is easy.
Simply go to brewercompany.com/warranty-registration, fill out the information fields and click send.
By registering your product today, you are better safeguarding your investment in the future.

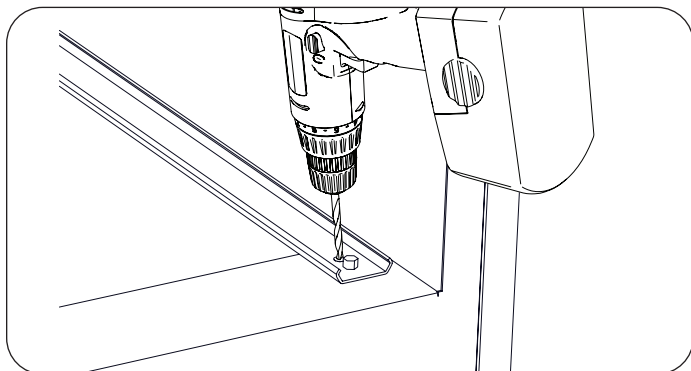
The Brewer Company, LLC
N88 W13901 Main Street, Suite 100
Menomonee Falls, WI 53051
P 800.558.8777
F 262.251.2332
E customerservice@brewercompany.com
www.brewercompany.com

Remove the Rear Drawer

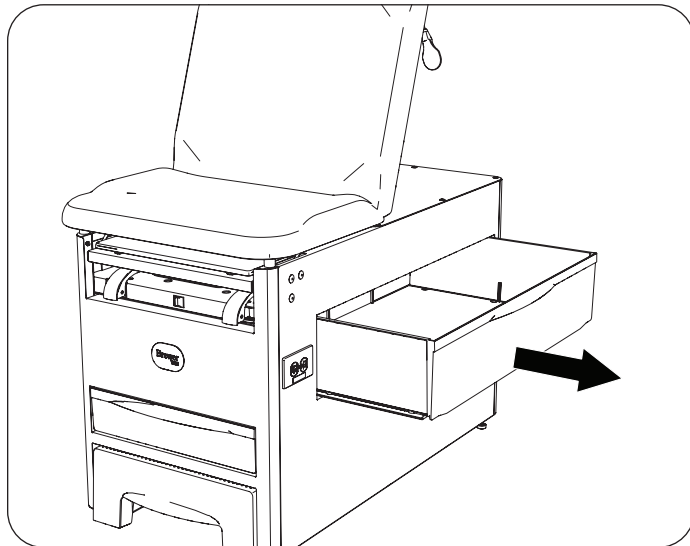
1. Disconnect the table power cord from the wall receptacle, if equipped.
2. Push the rear drawer to the right.



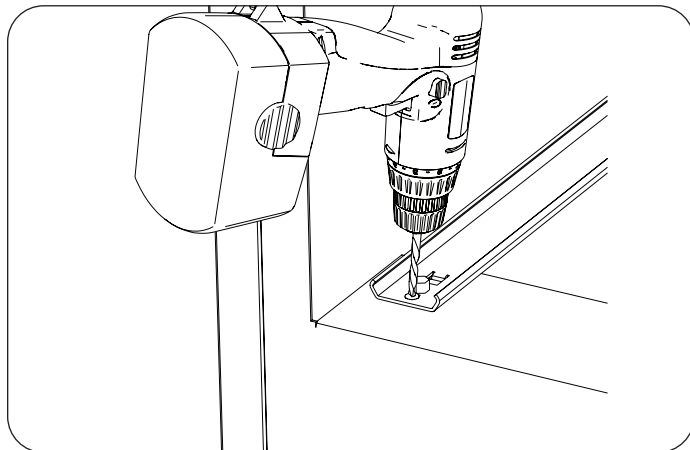
3. Using a drill with a 3/16" drill bit, remove the rivet attaching the drawer slide to the cabinet. Repeat for second drawer slide.
4. Drill the drawer slide and cabinet sheet metal to ensure the new screw will pass through hole.



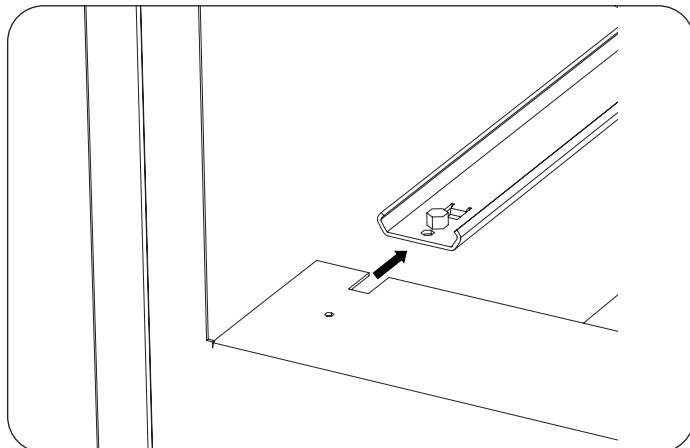
5. Carefully slide the rear drawer to the left side of the exam table.



6. Drill out the rivets on both drawer slides.

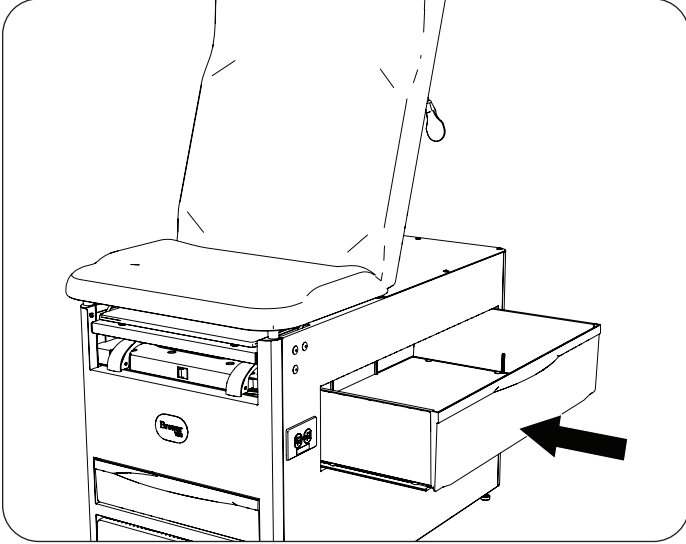


7. The right side ends of the drawer slides have a tab that seat into a slot in the cabinet. Pull the entire rear drawer assembly out of the exam table and discard.

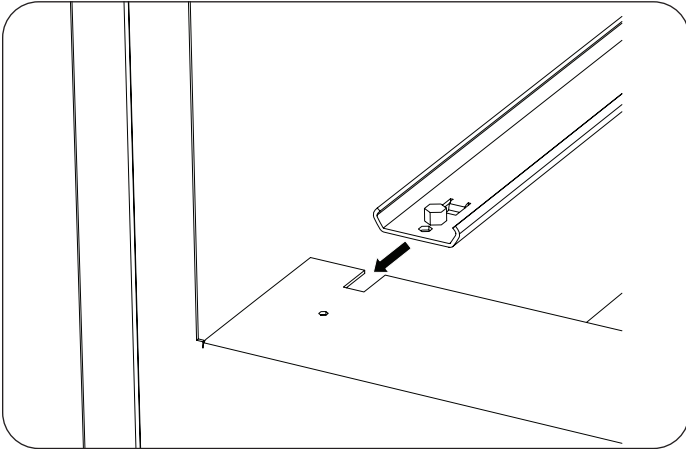


Install New Rear Drawer

1. From the left side of the table orient the new rear drawer assembly so the tabs on the drawer slides enter the table first.

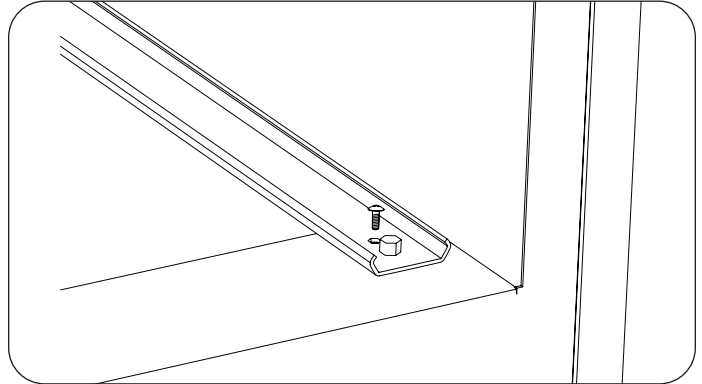


2. Guide the drawer slide tabs into the slots on the right hand side of the cabinet.



3. Carefully push the drawer further into the cabinet and align the mounting holes in the drawer slides with the holes in the cabinet. You may need to adjust the drawer slides slightly for proper alignment.

4. Secure each end of the drawer slides with the four screws and hex nuts provided.



5. Open and close the drawer several times to ensure good operation.
6. Reconnect the table power cord to the wall receptacle, if equipped.