



Read before removing table from pallet.

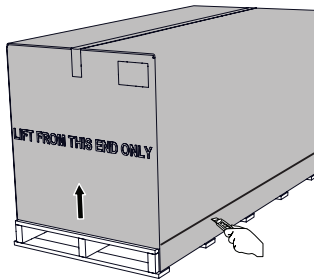
NOTICE: Avoid Damage — To avoid damaging table's upholstery or painted surfaces, use **EXTREME** care when using a knife to open the packaging.

NOTICE: A minimum of two people are required to remove table from pallet.

NOTICE: Do not enable mobility during installation.

Tools Required

- Drill driver
 - 7/16" socket bit, or 7/16" wrench
 - #2 Phillips bit
 - Side cutter
 - Furniture dolly
1. Cut carton above staples at base on each side of unit. Lift box off pallet.

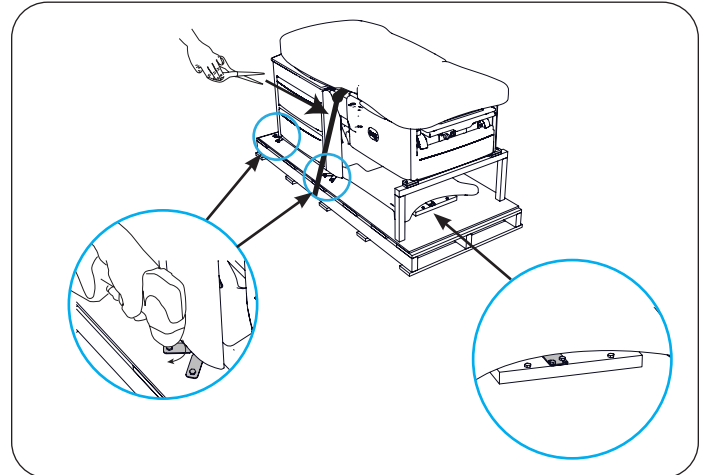


2. Remove stretch wrap surrounding table and cut bands.

HLT PLUS:

Remove hold down brackets (4 sides, 1 front).

Assist handles are located inside the drawers. Do not install assist handles until the unit is located inside the exam room.

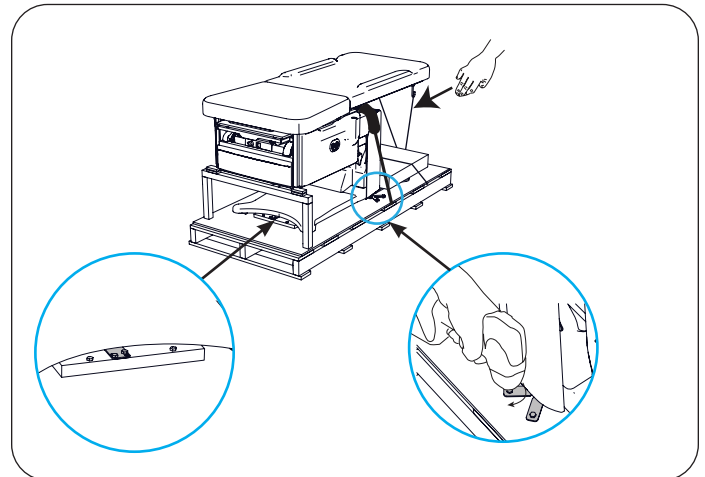


FLEX PLUS:

Remove hold down brackets (2 sides, 1 front).

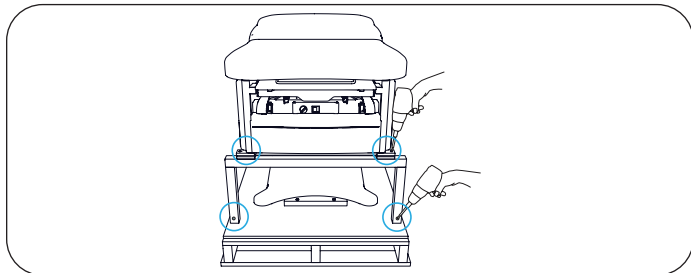
Remove rubber band around the hooks.

Remove box containing assist handles from the pallet. Do not discard the box. Do not install assist handles until the unit is located inside the exam room.



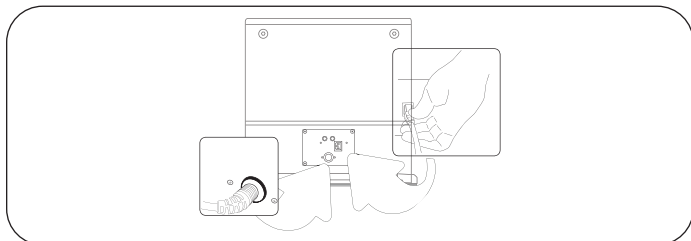
NOTICE: Remaining steps apply to both the HLT PLUS and FLEX PLUS tables.

3. Remove brace and spacer screws [be sure all (4) screws are removed].

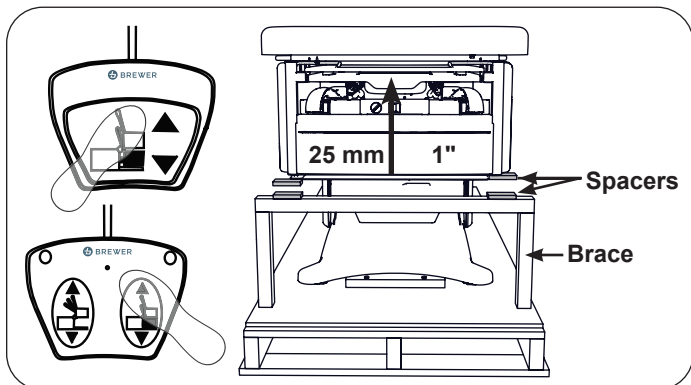


4. Plug in power cord and foot control cord at rear of table.

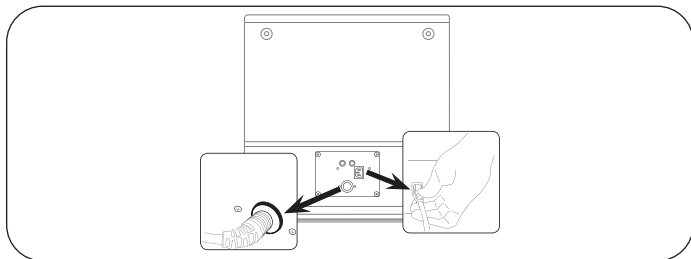
NOTICE: Confirm Voltage specs and Plug Type on rear of table.



5. Raise seat 1". Remove and discard brace and (4) spacers.



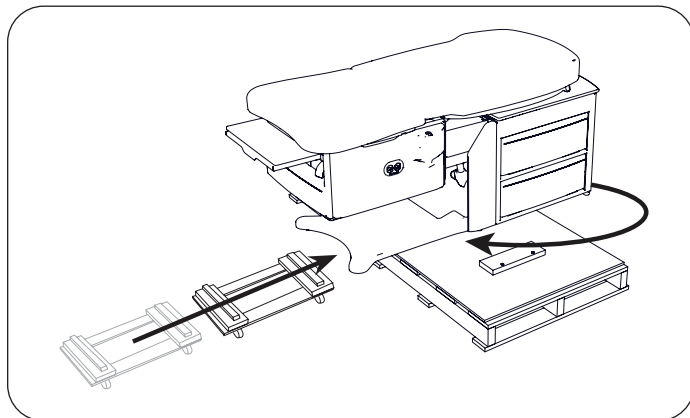
6. Unplug power cord and foot control cord.



7. Do NOT pull or lift by stirrups!



8. Pull leg support halfway out of the table. Use leg support to lift table straight up and rotate table 90° to clear wood block on shipping pallet. Lower straight down.
9. Slide furniture dolly under FRONT of table. Obtain new footholds and handholds. Lift table, move onto furniture dolly and lower.



10. Move table to its final location. Lift off of furniture dolly and set down into position. Do not push or pull sideways on fully extended leg support when positioning table.