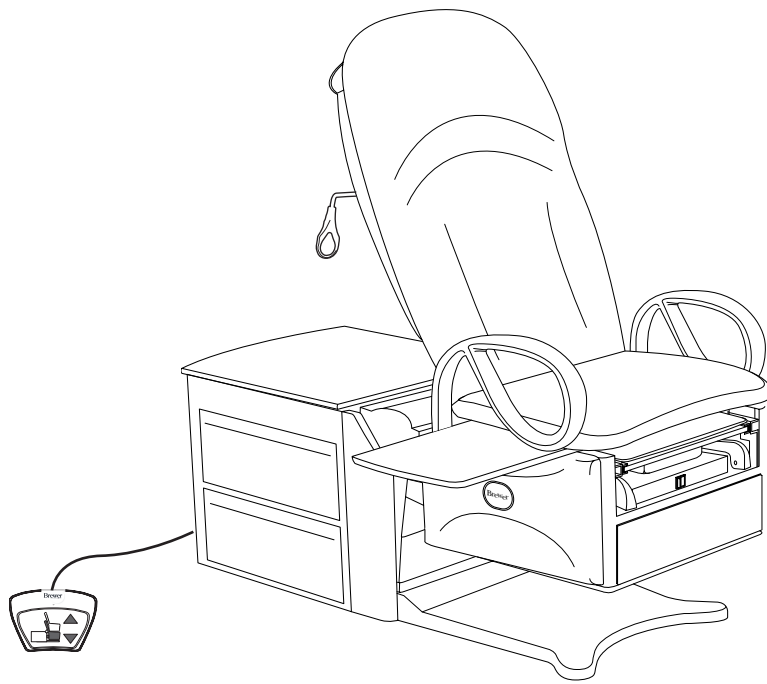


BrewerAccess High-Low

EXAM TABLE

Troubleshooting Guide



The Brewer Company, LLC
N88 W13901 Main Street, Suite 100
Menomonee Falls, WI 53051
P 1.888.Brewer.1
F 262.251.2332
www.brewercompany.com

TROUBLESHOOTING**Operating Test**

It is possible to verify normal operation of the series 6000 tables by performing the following series of tests.

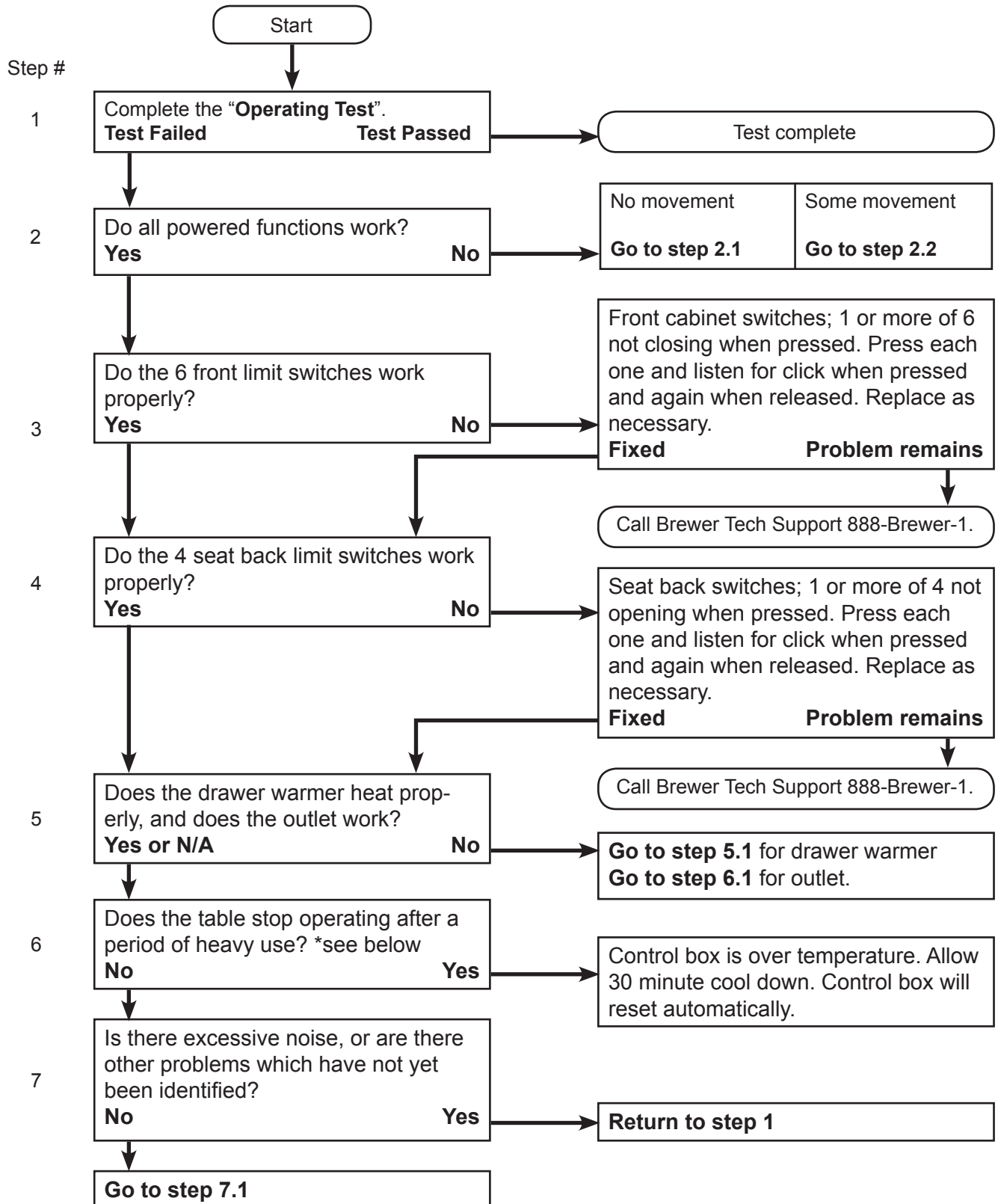
ALL MODELS**Lift test**

1. Ensure ON/OFF switch is in ON position.
2. Press and hold the TABLE UP pedal. The table should rise to the full up position (about 37") and stop. There must be no continuing motor hum after the table stops.
3. Release the TABLE UP pedal.
4. Press the TABLE DOWN pedal. While the table is going down pressing on each corner of the back of the seat must cause the table to momentarily stop.
5. The table should go to the full down position. Release the TABLE DOWN pedal.
6. Reach under the front section bottom plate and lift up momentarily on each corner of the plate. This should activate the lift causing the table to rise while the plate is lifted.
7. Turn the ON/OFF switch, located on the back of the rear cabinet, to the OFF position. Verify that pressing any of the foot pedals does not cause motion. Turn the ON/OFF switch to the ON position.

MODELS 6500, 6501, 6800 and 6801 ONLY**Powered Back test**

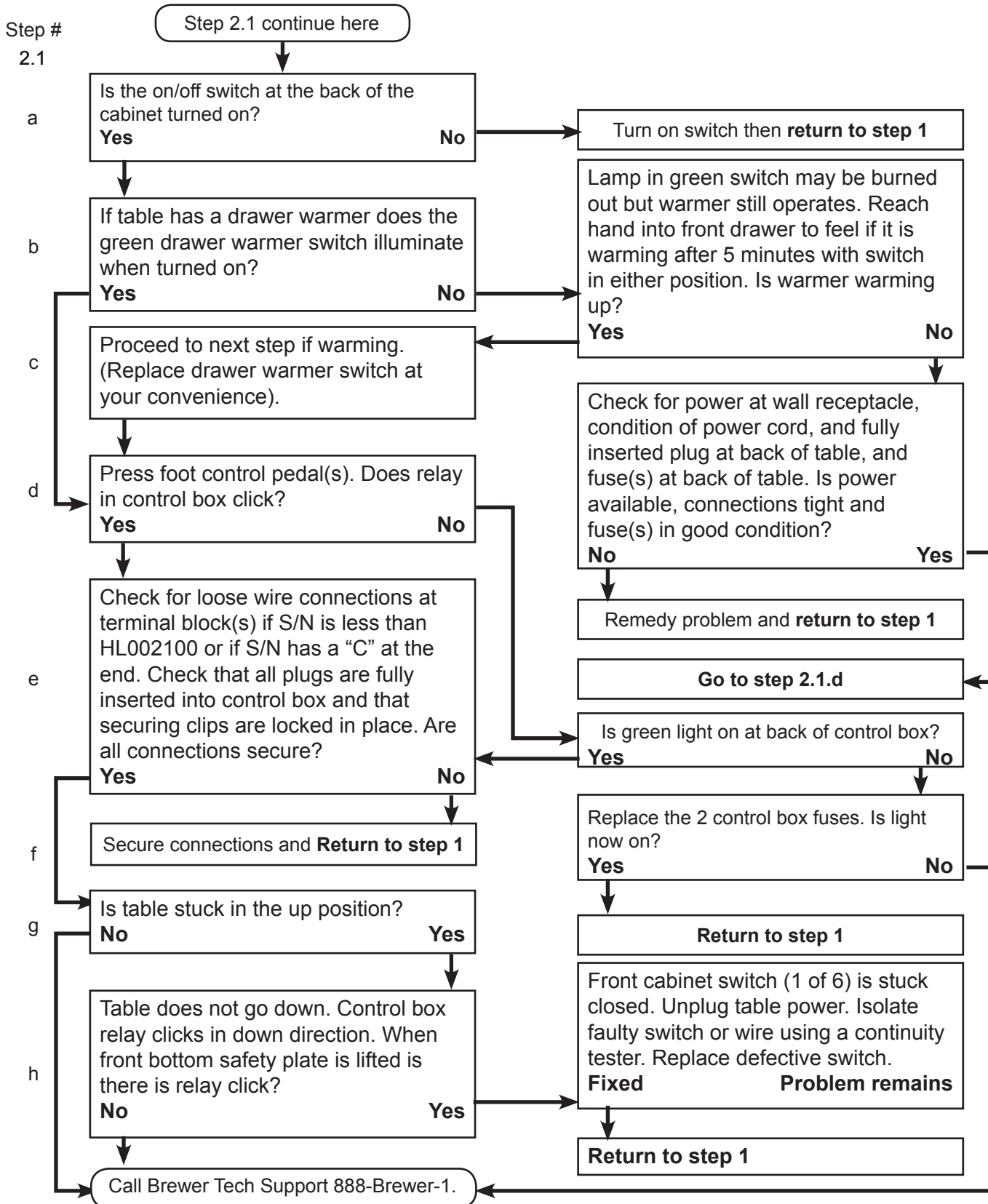
1. Press the TABLE UP pedal to raise the table above 28" so the back may be lowered without contacting the back cabinet.
2. Press the BACK DOWN pedal. The back should go to the full recline position, which is level.
3. Press the BACK UP pedal. The back should go to the full up position.
4. Press the BACK DOWN pedal. While the back is going down pressing on any corner of the back of the seat must cause the back to momentarily stop.
5. Press the blue RETURN TO CHAIR button on the foot control. While the chair is in motion momentarily press the red STOP button. The chair must stop and remain stopped.
6. Press the blue RETURN TO CHAIR button on the foot control. While the chair is in motion momentarily press the BACK UP pedal. The chair must stop and remain stopped.
7. Press the blue RETURN TO CHAIR button on the foot control. While the chair is in motion momentarily press the BACK DOWN pedal. The chair must stop and remain stopped.
8. Press the blue RETURN TO CHAIR button on the foot control. While the chair is in motion momentarily press the TABLE UP pedal. The chair must stop and remain stopped.
9. Press the blue RETURN TO CHAIR button on the foot control. While the chair is in motion momentarily press the TABLE DOWN pedal. The chair must stop and remain stopped.
10. Raise the table to the full up position, and then lower the back so the table is in the high table position. Press the blue RETURN TO CHAIR button. The table should first raise the back then lower to the chair low position.

6000 SERIES TABLE TROUBLESHOOTING CHART

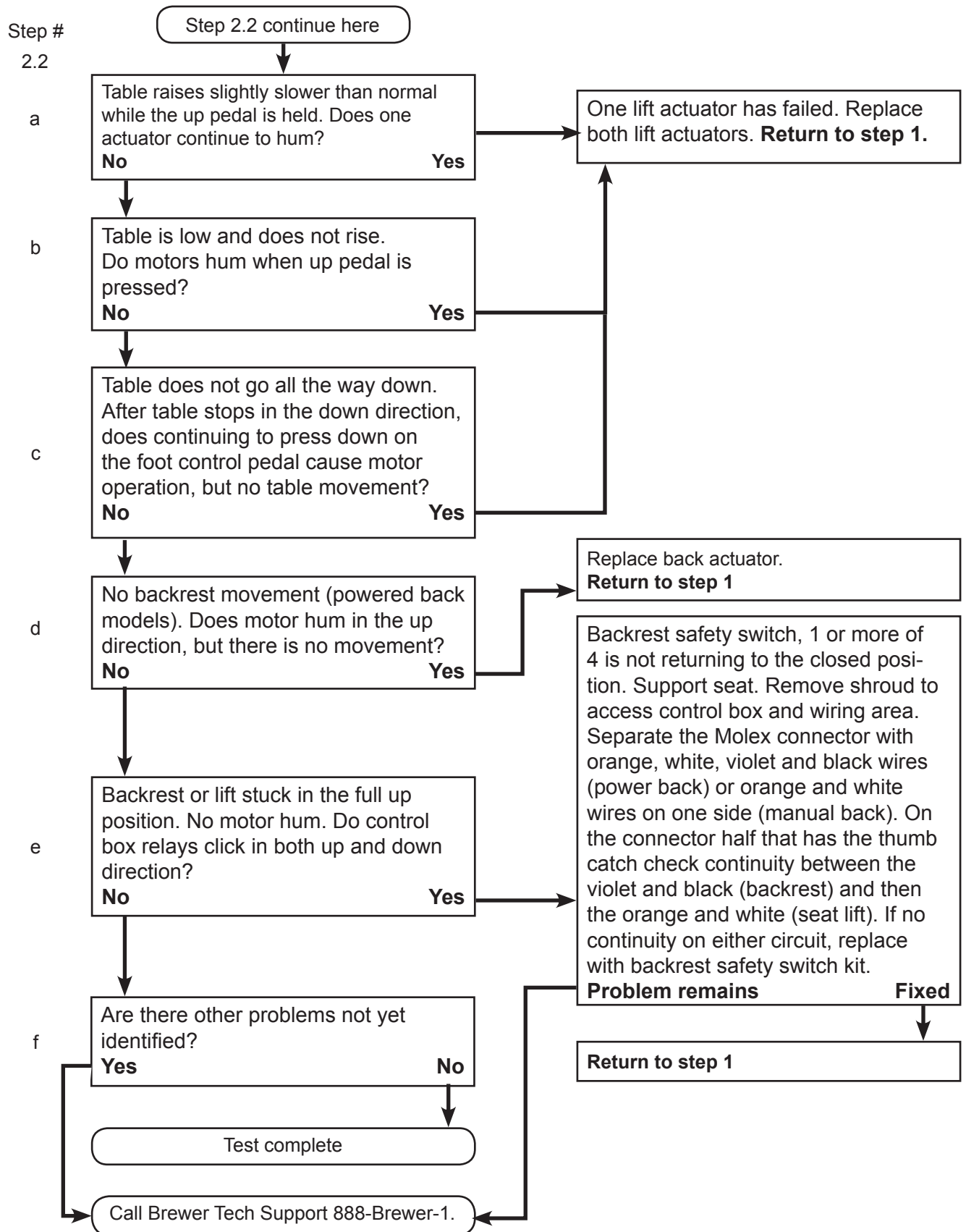


* No relay clicking in control box. Table then functions after about 30 minutes.

6000 SERIES TABLE TROUBLESHOOTING CHART

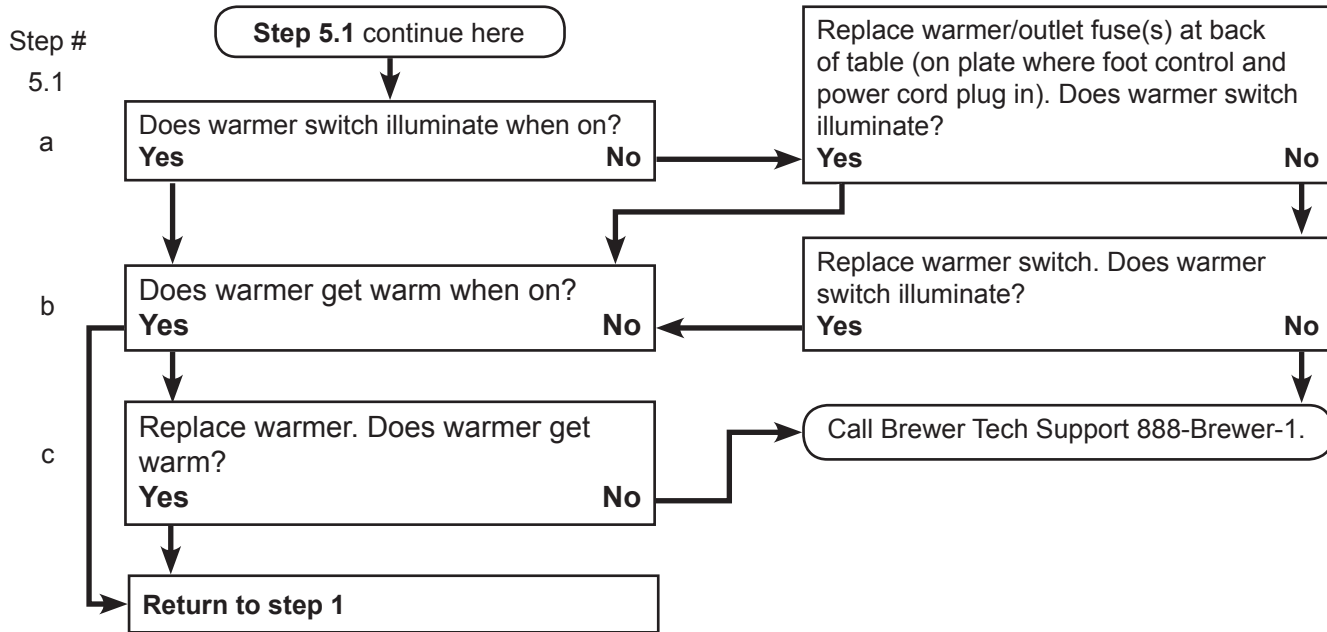


6000 SERIES TABLE TROUBLESHOOTING CHART (continued)

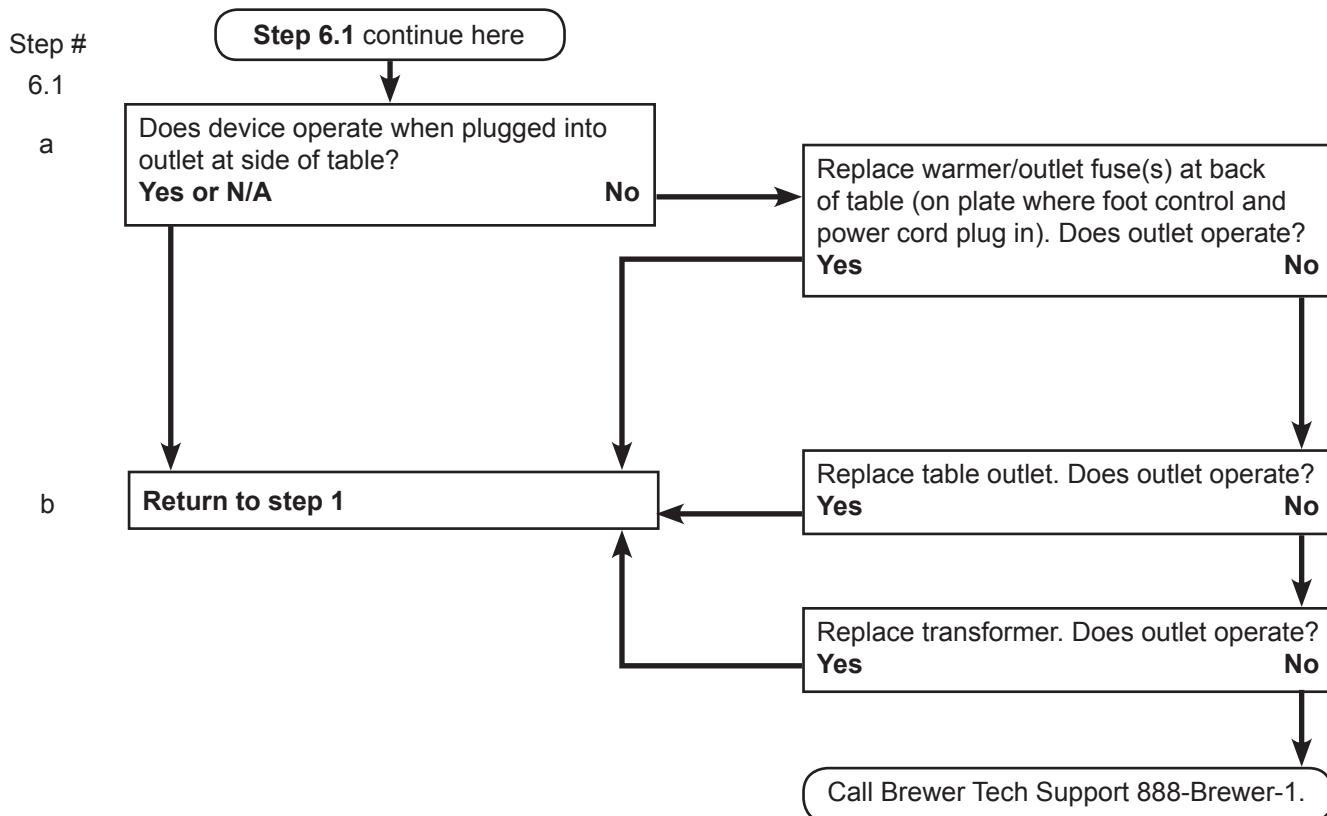


6000 SERIES TABLE TROUBLESHOOTING CHART (continued)

Drawer Warmer



Outlet Option



6000 SERIES TABLE TROUBLESHOOTING CHART (continued)

