

The Power to Advance

Dental Seating

The Power to Advance

Dynamic Split-Saddle



Premium Ergonomic



Performance Ergonomic



Contemporary



Traditional

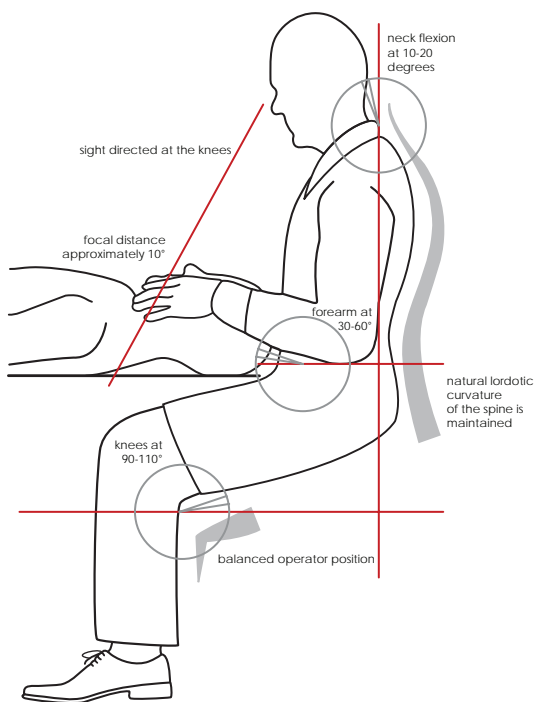


Brewer

Neutral Posture

Good vertical alignment of the head, neck, spine, and pelvis during seated activity promotes endurance and muscular efficiency. Clinical studies have shown that the risk of injuries involving the back, neck and shoulders can be greatly reduced by working in Neutral Posture.

Neutral Posture is sitting in a balanced, upright position with your weight evenly distributed. The position of any appendage is neither moved away from the body's midline, nor laterally turned or twisted.



- Lower back pain affects over 80% of dental professionals.
- For 20% of dentists, lower back pain results in everything from shortened work hours to a leave of absence.
- In addition, 29% retire earlier than desired.
- According to the ADA, over 300,000 injuries can be prevented each year with ergonomic seating. *

Common posture-related musculoskeletal problems are associated with awkward and extreme positions, repetitive motion and static posture. Prolonged sitting in poorly designed chairs with inadequate lumbar support and lack of seat tilt will result in muscular fatigue and can contribute to musculoskeletal pain and injuries.

Maintaining neutral posture should be of utmost concern for dental professionals. Proper positioning will help avoid pain, fatigue and injury. It is imperative to sustain a working posture where weight is evenly balanced and minimum stress is placed on the joints and muscular system.

Proper seating requires a tilting seat and lumbar support. Stools with a tilting seat help maintain the low-back curve, decrease disc pressure, enable closer positioning to the patient and may help reduce low-back pain. Furthermore, when the seat is tilted downward, the angles of the hip are opened which aids in maintaining the natural curve in the lower back. A backrest with lumbar support meets the back with ease and is essential to supporting the natural lumbar curve during procedures.

The Brewer Company, along with Marquette University, analyzed actual working conditions in the dental operatory. Through extensive testing and observation, they pinpointed the proper seating mechanics needed to accommodate the strenuous demands of the workday. Through a pressure mapping system, we have contoured the seat and backrest to eliminate pressure points and pinching.

*Statistics from: American Dental Association & Auguston TE, Morken T. "Musculoskeletal problems among dental health personnel." Tidsskr Nor Lægeforen. 1996; 116(23): 2776-2780

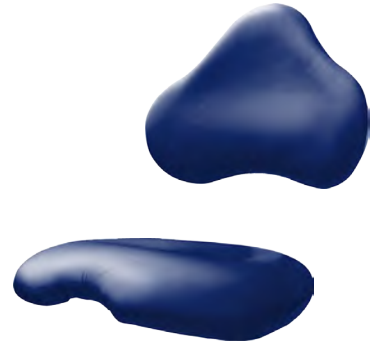
Ergonomic Seating

As a dental professional, your work often necessitates leaning and bending forward while seated. This causes increased muscle contractions and imposes greater force on vulnerable structures of your spine. As you will testify, prolonged sitting without adequate support or adjustability has resulted in muscle fatigue and pain in the lower back and neck region.

Brewer, the most trusted name in dental seating has conducted years of extensive research in response to your needs.

Utilizing a pressure mapping system, we have contoured the seat and lumbar support to eliminate pressure points and pinching. We have combined the latest technology with superior materials and workmanship to bring you the most innovative seating available today.

Well designed backrests with lumbar support provides extra supports and shoulder blade clearance.



Well designed saddle-style seats incorporate a flexible waterfall front that positions you closer to the patient.

HybriGel™ Foam

NEW, exclusive to Brewer, HybriGel™ foam is a gel-infused memory foam that gives advanced pressure management and superior cooling comfort.

INTRODUCING

A new foam technology exclusive to Brewer. Gel-infused memory foam provides the ultimate in comfort and pressure management.

COMFORT

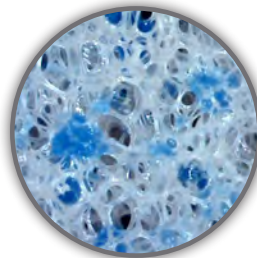
The Brewer HybriGel™ foam is uniquely designed to deliver lower average body pressure and temperature than other advanced materials.

PRESSURE MANAGEMENT

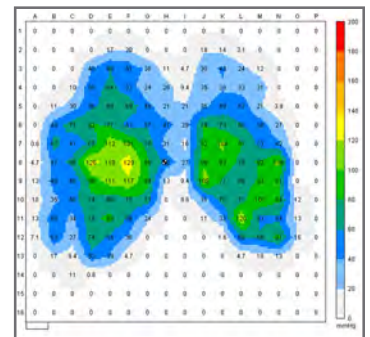
The body needs proper support. While ordinary viscoelastic foams can sink and hammock, HybriGel™ foam works to support the body for superior pressure relief.

OPEN CELL STRUCTURE

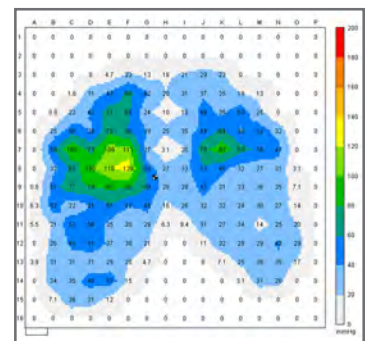
Heat builds up when your body is in contact with a support foam material. While other memory foams can trap heat against the body, HybriGel™ foam combines an open cell structure with the support gel to dramatically increase airflow and cool the surface temperature.



Brewer HybriGel™ foam is standard on our premium ergonomic seating line. It is standard on both the doctor and assistant models; seat and body supports.



Without HybriGel - Avg. Pressure = 49



With HybriGel - Avg. Pressure = 36.9

Dynamic Split-Saddle

Optimize posture and production with Brewer's patented breakthrough – Dynamic Split-Saddle-Seat Technology.

Patented Split Saddle Seat improves comfort

- Eases the load on back muscles by distributing weight over “sit bones” and wider hip abduction lessens the tendency to slump.
- Helps cool the body, relieve pressure, improve circulation and protect reproduction health.

Unique circular 360° movement strengthens core muscles

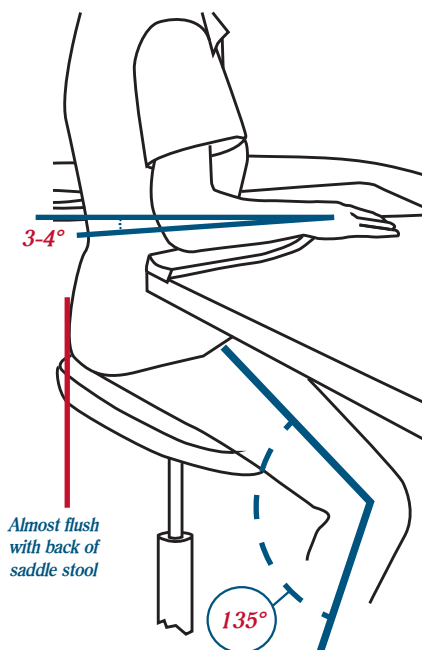
- Dynamic movement offers full 360° tilt to maintain proper neutral posture while you work and move around
- Lessens spinal muscle degeneration and back pain
- Core muscles become active and support the spine when sitting, which helps them become stronger over time

Ergonomic saddle-seat design enhances posture

- Naturally aligns vertebrae and discs.
- Relieves shoulder and neck tension.

Engineered to support deeper breathing

- More oxygen promotes circulation and helps reduce fatigue.
- Natural posture elongates the torso, more room for lung expansion.



A unique angle on comfort.

The Brewer 135DSS is designed to provide the most beneficial seating position possible.

Simply adjust the seat height so your upper and lower legs create a 135° angle while both feet are flat on the ground. Tailbone should be almost flush with the back of the saddle. This position naturally aligns the spine to minimize strain on back muscles.

In studies, 87% of women and 80% of men have preferred the patented split-saddle-seat technology found in the innovative Brewer 135DSS to other saddle seating options.

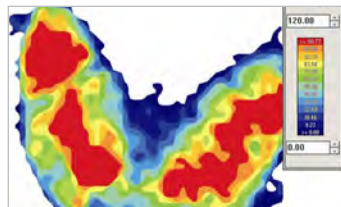
135DSS Series

All Dynamic Split-Saddle 135DSS Stools feature:

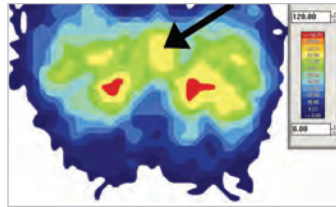
- Patented split-saddle-seat design
- Unique 360° circular movement, can be customized to personal preference
- Three height ranges available so the optimum angle of the knee (135°) can be achieved.
- Easy-to-use pneumatic seat height adjustment
- 23" diameter, 5-leg cast aluminum base
- Waterfall edges eliminate pinching
- Large dual-wheel hooded, poly-tread casters; Locking casters optional
- 250 lb weight capacity
- Standard 5 year warranty
- Numerous color options available, including premium UltraLeather™ upholstery



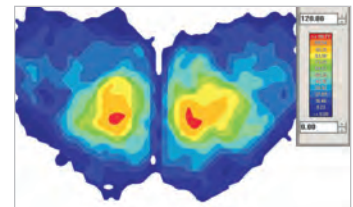
	adjustable height range	shipping weight	seamless upholstery	recommended user height
135DSS	22.5"-29.75"	28	Yes	5'3" - 5'11"
135DSS-L	18.75"-23.75"	28	Yes	Under 5'3"
135DSS-H	24"-33.75"	28	Yes	Over 5'11"
3102670	Optional Locking Casters, Set of 5			



Ordinary Office Chair



Ordinary Saddle Seat



135DSS Dynamic Split-Saddle Seat

Pressure mapping images clearly show the significant pressure relief provided by the patented Split-Saddle-Seat technology found in the Brewer 135DSS.

Premium Ergonomic

All Premium 9000, 9100 & 9200 Ergonomic Series Stools Feature:

- Continuous, synchronized movement of the saddle-style seat and lumbar support
 - Allows for proper weight distribution
 - Encourages neutral posture
 - Promotes muscular health
- Lumbar support backrest has ratcheted height adjustment
- Includes the new exclusive HybriGel™ foam, a gel-infused memory foam that gives advanced pressure management and superior cooling comfort
- 25" diameter powder-coated; 5-leg cast aluminum base with hooded, dual wheel, polyurethane-tread casters
- 250 lb weight capacity
- Standard 5 year warranty

Operator Models:

- Four optional column height ranges:
- 15.5" - 20"
- 18.5" - 24.5"
- 20.5" - 26.5"
- 22" - 31" (w/ footring)

Assistant Models:

- Contoured, ratcheted, adjustable body support with HybriGel™ foam
- Left and right body support models available
- Adjustable foot ring standard
- Height: 24"-32"

9000 Series

The original ergonomic stool offers thick, plush upholstery with a deeper, cut out seat and full size backrest.

	adjustable height range	shipping weight	seamless upholstery	adjustable foot ring	body support
9000B	18.5"-24.5"	37	Yes	-	-
9000BST	18.5"-24.5"	37	-	-	-
9000BL	15.5"-20"	37	Yes	-	-
9000BST-L	15.5"-20"	37	-	-	-
9000B-H	20.5"-26.5"	37	Yes	-	-
9000BST-H	20.5"-26.5"	37	-	-	-
9000BFR	22"-31"	40	Yes	Yes	-
9000BFRST	22"-31"	40	-	Yes	-
9020BL	24"-32"	58	Yes	Yes	Left
9020BLST	24"-32"	58	-	Yes	Left
9020BR	24"-32"	58	Yes	Yes	Right
9020BRV	24"-32"	58	-	Yes	Right



9020BR



9000B

Backrest Dim:
18" x 15"

Seat Dim:
18" x 18"

9100 Series

All the benefits of our original 9000 Series ergonomic stool with smaller, sleek upholstery.

	adjustable height range	shipping weight	seamless upholstery	adjustable foot ring	body support
9100B	18.5"-24.5"	37	-	-	-
9100BV	18.5"-24.5"	37	Yes	-	-
9100BL	15.5"-20"	37	-	-	-
9100BVL	15.5"-20"	37	Yes	-	-
9100B-H	20.5"-26.5"	37	-	-	-
9100BV-H	20.5"-26.5"	37	Yes	-	-
9100BFR	22"-31"	40	-	Yes	-
9100BVFR	22"-31"	40	Yes	Yes	-
9120BL	24"-32"	58	-	Yes	Left
9120BLV	24"-32"	58	Yes	Yes	Left
9120BR	24"-32"	58	-	Yes	Right
9120BRV	24"-32"	58	Yes	Yes	Right



9120BVR



9100BV

Backrest Dim:
18" x 12"

Seat Dim:
18" x 16"

9200 Series

The best of both worlds, this stool features the deeper seat from our 9000 Series with the smaller, sleek backrest from our 9100 Series.

	adjustable height range	shipping weight	seamless upholstery	adjustable foot ring	body support
9200B	18.5"-24.5"	37	Yes	-	-
9200BST	18.5"-24.5"	37	-	-	-
9200BL	15.5"-20"	37	Yes	-	-
9200BST-L	15.5"-20"	37	-	-	-
9200B-H	20.5"-26.5"	37	Yes	-	-
9200BST-H	20.5"-26.5"	37	-	-	-
9200BFR	22"-31"	40	Yes	Yes	-
9200BFRST	22"-31"	40	-	Yes	-
9220BL	24"-32"	58	Yes	Yes	Left
9220BLST	24"-32"	58	-	Yes	Left
9220BR	24"-32"	58	Yes	Yes	Right
9220BRV	24"-32"	58	-	Yes	Right



9220BRST



9200B

Backrest Dim:
18" x 12"

Seat Dim:
18" x 18"

Performance Ergonomic

All Performance 3100 & 3300 Ergonomic Series Stools Feature:

- Adjustable, contoured, 13"h x 15.5"w backrest with shroud
- Contoured, 18"w x 18"d seat cushion with waterfall edges
- Adjustable, contoured backrest; standard on operators
- 24" diameter powder-coated; 5-leg cast aluminum base
- Hooded, dual-wheel casters with polyurethane tread
- 250 lb weight capacity
- Standard 5 year warranty

Ergonomics, comfort, and durability make these series a good choice.

3100 Series

3125B - Operator's Stool

- Dual adjustable backrest with aseptic shroud
- Contoured, Tilting Backrest
- Pneumatic height adjustment 17.5"-24"

3125BFR - Operator's Stool (high height)

- Dual adjustable backrest with aseptic shroud
- Pneumatic height adjustment 20" - 26"
- Adjustable footring standard

3145L/R - Assistant's Stool

- Adjustable body support with patented ratchet
- Left and right body support models available
- Pneumatic height adjustment 22" - 31"
- Adjustable footring standard



3125BFR



3145L



3125B

	adjustable height range	shipping weight	seamless upholstery	adjustable foot ring	body support	back tilt
3125B	17.5"-24"	29	Yes	-	-	Yes
3125BV	17.5"-24"	29	Yes	-	-	Yes
3125BFR	20"-26"	32	Yes	Yes	-	Yes
3125BFRV	20"-26"	32	Yes	Yes	-	Yes
3145L	22"-31"	30	Yes	Yes	Left	-
3145LV	22"-31"	30	Yes	Yes	Left	-
3145R	22"-31"	30	Yes	Yes	Right	-
3145RV	22"-31"	30	Yes	Yes	Right	-

3300 Series

3335B - Operator's Stool

- Synchronized seat and backrest tilt
- Pneumatic height: 18" - 25"

3335BA - Operator's Stool

- Synchronized seat and backrest tilt
- Pneumatic height: 18" - 25"
- Stationary armrests standard

3345L/R - Assistant's Stool

- Body support with patented ratchet
- Left and right body support models available
- Pneumatic height: 22" - 31"
- Adjustable footring standard

3345BL/R - Assistant's Stool

- Contoured backrest
- Body support with patented ratchet
- Left and right body support models available
- Pneumatic height: 22" - 31"
- Adjustable footring standard

3355BL/R - Assistant's Stool

- Incorporates the features of the 3345BL/R stool with a synchronized seat and backrest tilt
- Backrest has adjustable height

	adjustable height range	shipping weight	seamless upholstery	adjustable foot ring	body support	seat/back tilt
3335B	18"-25"	33	Yes	-	-	Yes
3335BV	18"-25"	33	Yes	-	-	Yes
3335BA*	18"-25"	45	Yes	-	-	Yes
3335BVA*	18"-25"	45	Yes	-	-	Yes
3335BFR	20"-26"	36	Yes	Yes	-	Yes
3335BFRV	20"-26"	36	Yes	Yes	-	Yes
3345L	22"-31"	30	Yes	Yes	Left	-
3345LV	22"-31"	30	Yes	Yes	Left	-
3345R	22"-31"	30	Yes	Yes	Right	-
3345RV	22"-31"	30	Yes	Yes	Right	-
3345BL	22"-31"	41	Yes	Yes	Left	-
3345BLV	22"-31"	41	Yes	Yes	Left	-
3345BR	22"-31"	41	Yes	Yes	Right	-
3345BRV	22"-31"	41	Yes	Yes	Right	-
3355BL	22"-31"	41	Yes	Yes	Left	Yes
3355BLV	22"-31"	41	Yes	Yes	Left	Yes
3355BR	22"-31"	41	Yes	Yes	Right	Yes
3355BRV	22"-31"	41	Yes	Yes	Right	Yes

*Stool with Stationary Arms



3335BA
(stationary arms)



3345BR



3355BL
(with tilt)



3345L



3335B

Contemporary Seating

2000 Series

Contemporary styling and superior quality ... priced right.

All 2000 Series Seating Feature:

- Round, 16" wide, 4" thick poly-foam seat cushion
- Optional contoured backrest with aseptic shroud; 13"w x 8.5"h x 1"
- 24" diameter, 5-leg powder-coated cast aluminum base
- Hooded, dual-wheel casters with polyurethane tread
- 250 lb weight capacity
- Standard 5 year warranty

2020B - Operator's Stool

- Contoured backrest with aseptic shroud
- Pneumatic height: 18" - 24"



2021B - Operator's Stool

- Contoured backrest with aseptic shroud
- Pneumatic height: 20" - 26"
- Adjustable footring optional



2042L/R - Assistant's Stool

- 360° adjustable body support arm
- Adjustable footring standard



2052L/R - Assistant's Stool

- Ratcheted body support arm
- Left and right body support models available
- Adjustable footring standard



2052BL/R - Assistant's Stool

- Contoured backrest with aseptic shroud
- Ratcheted body support arm
- Left and right body support models available
- Pneumatic height: 20" - 26"
- Adjustable footring standard



	height range	shipping weight	seamless upholstery	backrest	adjustable foot ring
2020	18"-24"	20	-	-	-
2020V	18"-24"	20	Yes	-	-
2020B	18"-24"	25	-	Yes	-
2020BV	18"-24"	25	Yes	Yes	-
2021	20"-26"	20	-	-	-
2021V	20"-26"	20	Yes	-	-
2021FR	20"-26"	21	-	-	Yes
2021VFR	20"-26"	21	Yes	-	Yes
2021B	20"-26"	25	-	Yes	-
2021BV	20"-26"	25	Yes	Yes	-
2021BFR	20"-26"	25	-	Yes	Yes
2021BVFR	20"-26"	25	Yes	Yes	Yes

	height range	shipping weight	seamless upholstery	backrest	adjustable foot ring	body support
2042L	20"-26"	28	-	-	Yes	Left
2042LV	20"-26"	28	Yes	-	Yes	Left
2042R	20"-26"	28	-	-	Yes	Right
2042RV	20"-26"	28	Yes	-	Yes	Right
2052L	20"-26"	28	-	-	Yes	Left
2052LV	20"-26"	28	Yes	-	Yes	Left
2052R	20"-26"	28	-	-	Yes	Right
2052RV	20"-26"	28	Yes	-	Yes	Right
2052BL	20"-26"	28	-	Yes	Yes	Left
2052BLV	20"-26"	28	Yes	Yes	Yes	Left
2052BR	20"-26"	28	-	Yes	Yes	Right
2052BRV	20"-26"	28	Yes	Yes	Yes	Right

Traditional Seating

11001 Series

Traditional pneumatic stools designed for comfort.

All 11001 Series Seating Feature:

- Round, 16" wide, 4" thick poly-foam seat cushion
- Optional contoured backrest with aseptic shroud; 13"w x 8.5"h x 1"
- 23" diameter, 5-leg brushed cast aluminum base
- Easy-to-use pneumatic height adjustment; two heights available
- Hooded, dual-wheel casters
- 250 lb weight capacity
- Standard 5 year warranty

11001-D - Operator's Stool

- Pneumatic height adjustment 18" - 24"

11001B-D - Operator's Stool

- Contoured backrest
- Pneumatic height adjustment 18" - 24"

11001FR-D - Operator's Stool (high height)

- Pneumatic height adjustment 20" - 27.5"
- Adjustable footring standard

11001FRA-D - Assistant's Stool

- 360° adjustable body support arm
- Pneumatic height adjustment 20" - 27.5"
- Adjustable footring standard



11001-D



11001FR-D



11001FRA-D



11001B-D

	adjustable height range	shipping weight	seamless upholstery	backrest	adjustable foot ring	swing arm
11001-D	18"-24"	21	-	-	-	-
11001V-D	18"-24"	21	Yes	-	-	-
11001B-D	18"-24"	26	-	Yes	-	-
11001BV-D	18"-24"	26	Yes	Yes	-	-
11001FR-D	20"-27.5"	24	-	-	Yes	-
11001VFR-D	20"-27.5"	24	Yes	-	Yes	-
11001BFR-D	20"-27.5"	29	-	Yes	Yes	-
11001BVFR-D	20"-27.5"	29	Yes	Yes	Yes	-
11020-D	20"-27.5"	22	-	-	-	-
11020B-D	20"-27.5"	27	-	Yes	-	-
11001FRA-D	20"-27.5"	24	-	-	Yes	Yes
11001VFRA-D	20"-27.5"	24	Yes	-	Yes	Yes

The Power to Advance Dental Seating



Advanced Ergonomic Seating

Your production is only as good as the wellbeing of your team. That's why Brewer continues to lead the fight against profit-robbing MSDs with the most innovative seating solutions available for your our entire team. Get "The Power To Advance" your health and the health of your practice!

Through better ergonomic seating solutions for you and your staff, Brewer helps practices achieve smarter economics. Brewer offers the most comprehensive line of advanced ergonomic seating solutions in the industry - innovations designed to help you safeguard the backbone of a productive practice like no one else can.

In addition, Brewer seating solutions are proudly made in the USA. Our extensive line of solutions is manufactured to our rigorous quality standards and backed by best-in-class standard warranties. It's all part of our commitment to provide you with The Power to Advance.

For more information about the many ways we deliver The Power to Advance, contact your Brewer dental representative or local equipment dealer today.

Brewer

The Power to Advance

The Brewer Company, LLC
N88W13901 Main Street, Suite 100
Menomonee Falls, WI 53051

P 1.800.558.8934

F 1.262.251.4391

www.brewercompany.com

